

Migrating from Version 7 to Version 8

Implications for Care Management Initiatives

Heather Castro, MS, Marianne Moulet, RN, BSN, CCM,
Laura Eaker, RN, BSN, CCM, Cristina Lawrence, BS,
Martha Sylvia, RN, MSN, MBA

Johns Hopkins HealthCare LLC



Improving Your Hand in Care Management

May 4-7, 2008 - The Mirage - Las Vegas, Nevada

Agenda

- Background
- Changes
 - Equivalently sized groups
 - Step-wise increase
 - Alignment of PRI & DxRx-PM scores
 - Changes in individual scores
- Implications



Background

- Version 8 available since Sept. 2006
- JHHC implemented spring 2007
- V8 incorporates pharmacy data
- New features include:
 - Rx-MG
 - Rx-PM
 - New reports
 - Improved overall predictive scoring
- Probability score name changed:
 - ACG_PM in Version 7
 - DxRx-PM in Version 8
- Other changes?



Methods

- 12 month experience period ending June 30, 2006
- Medicaid MCO line of business
- N=151,820 members
- Same members run through Version 7 and Version 8
- DxRx-PM (formerly ACG_PM) score range = 0.0 – 1.0



Equivalently Sized Groups

- Version 7
 - The number of members with any given ACG_PM score is variable.
- Version 8
 - At higher scores (>0.13), equal number of members are assigned a given DxRx-PM score.



Step-wise Increase

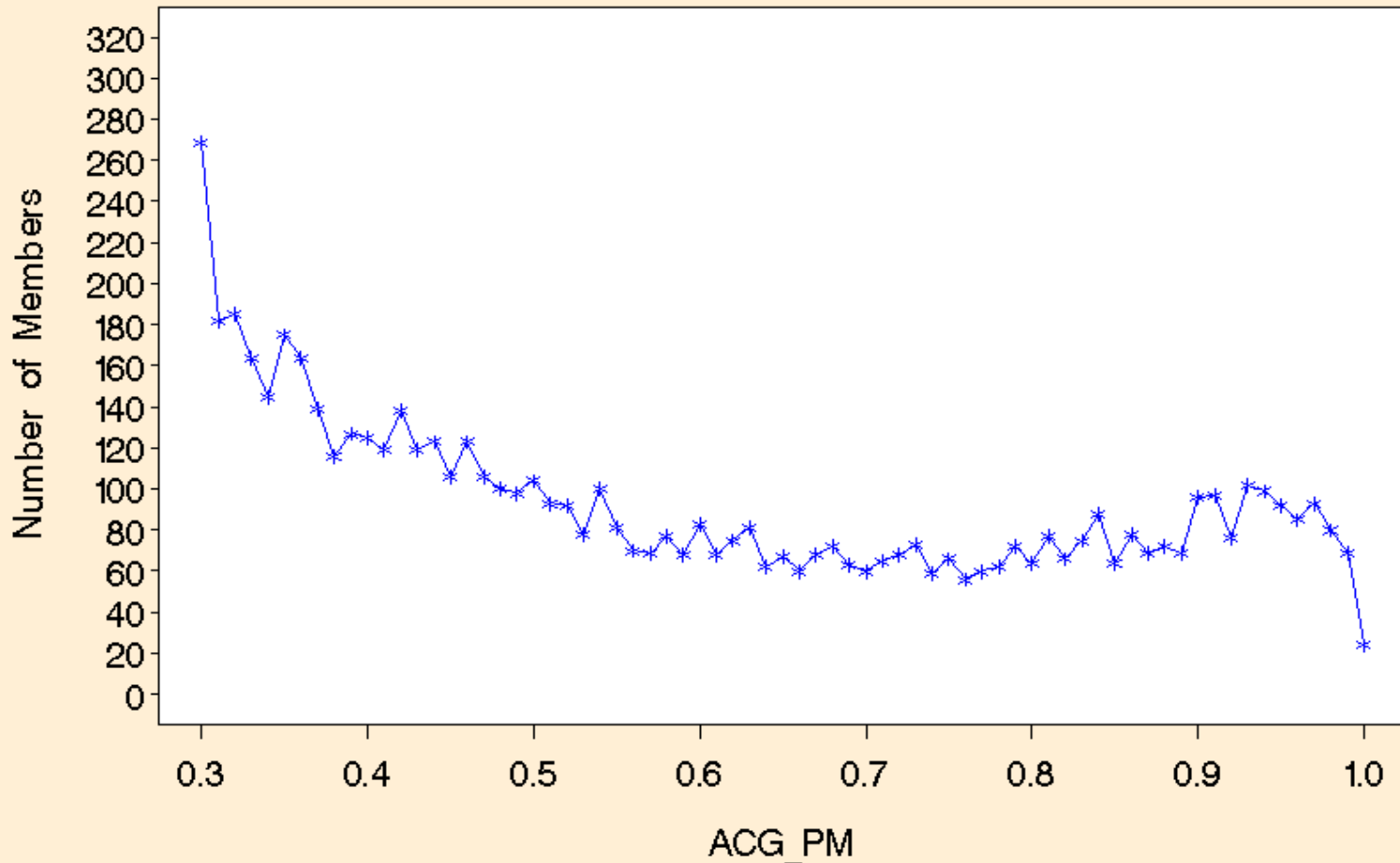
- Version 7
 - Every unique member could be assigned a unique ACG_PM score from 0.0 to 1.0.
- Version 8
 - Members are assigned to only certain DxRx-PM scores.
 - 0.82, 0.88, 0.95, etc.



THE JOHNS HOPKINS UNIVERSITY'S 2008 ACG INTERNATIONAL RISK ADJUSTMENT CONFERENCE

Frequency Count of Members by ACG_PM Score
Version 7

**Version
7**



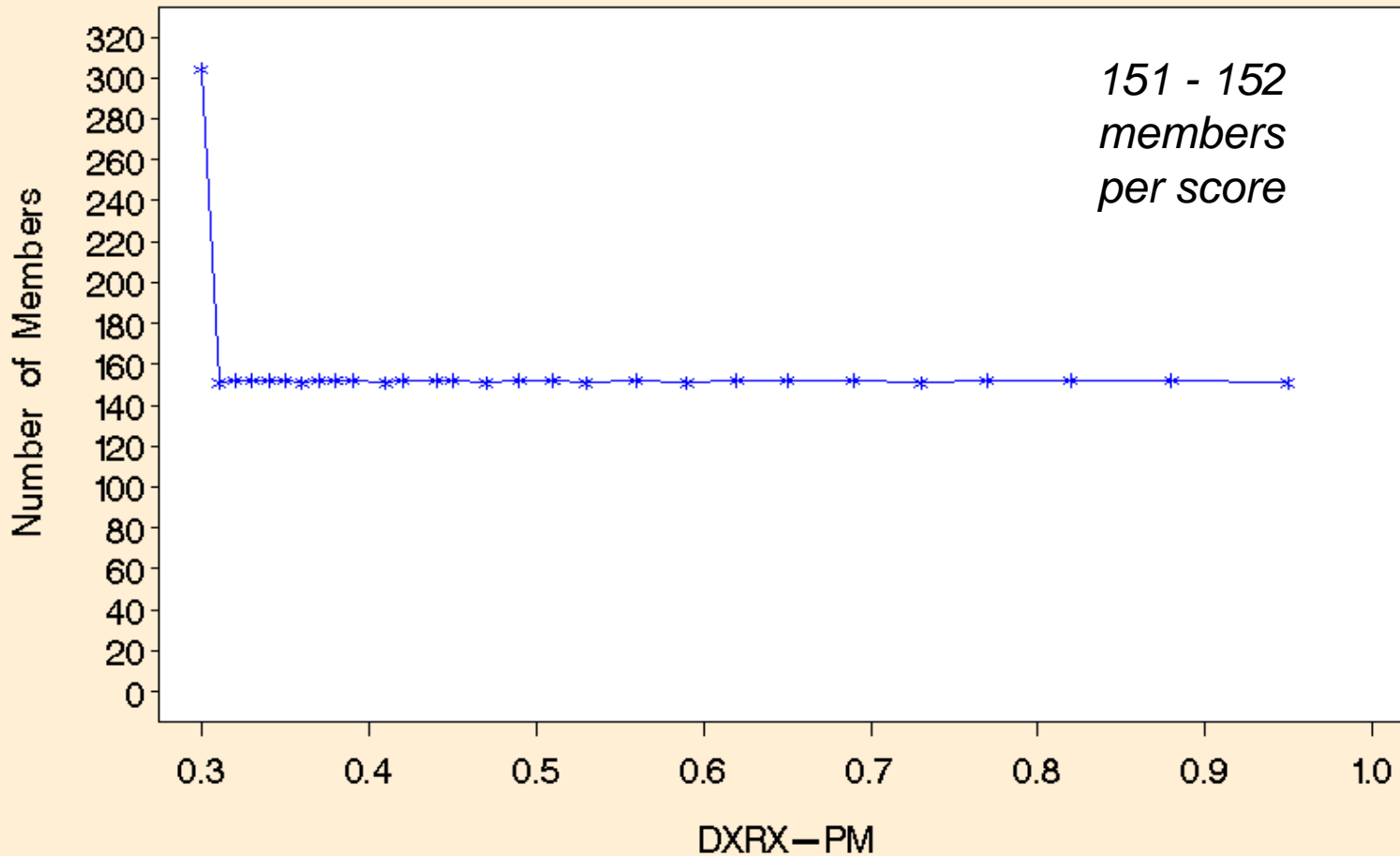
Improving Your Hand in Care Management

May 4-7, 2008 - The Mirage - Las Vegas, Nevada

THE JOHNS HOPKINS UNIVERSITY'S 2008 ACG INTERNATIONAL RISK ADJUSTMENT CONFERENCE

Frequency Count of Members by DXRX—PM Score
Version 8

**Version
8**



Improving Your Hand in Care Management

May 4-7, 2008 - The Mirage - Las Vegas, Nevada

DxRx-MG and PRI Alignment

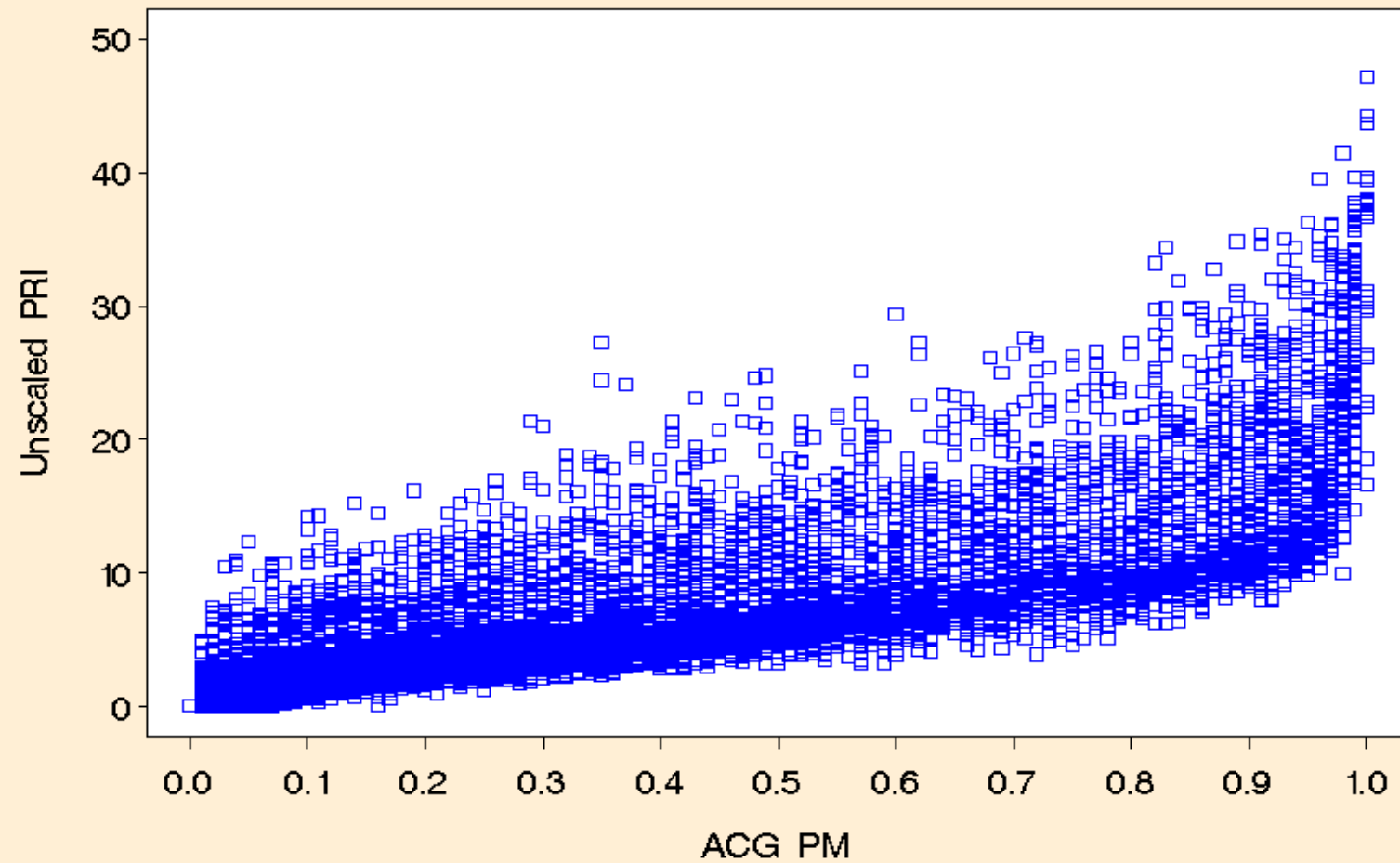
- Version 7
 - A member could have any combination of PRI and ACG_PM score.
- Version 8
 - Now assigning probability scores to ranges of a predicted resource index. Groups of patients with similar scores are assigned the same probability score.



THE JOHNS HOPKINS UNIVERSITY'S 2008 ACG INTERNATIONAL RISK ADJUSTMENT CONFERENCE

Members ACG_PM & Unscaled PRI Scores
ACG version 7

**Version
7**



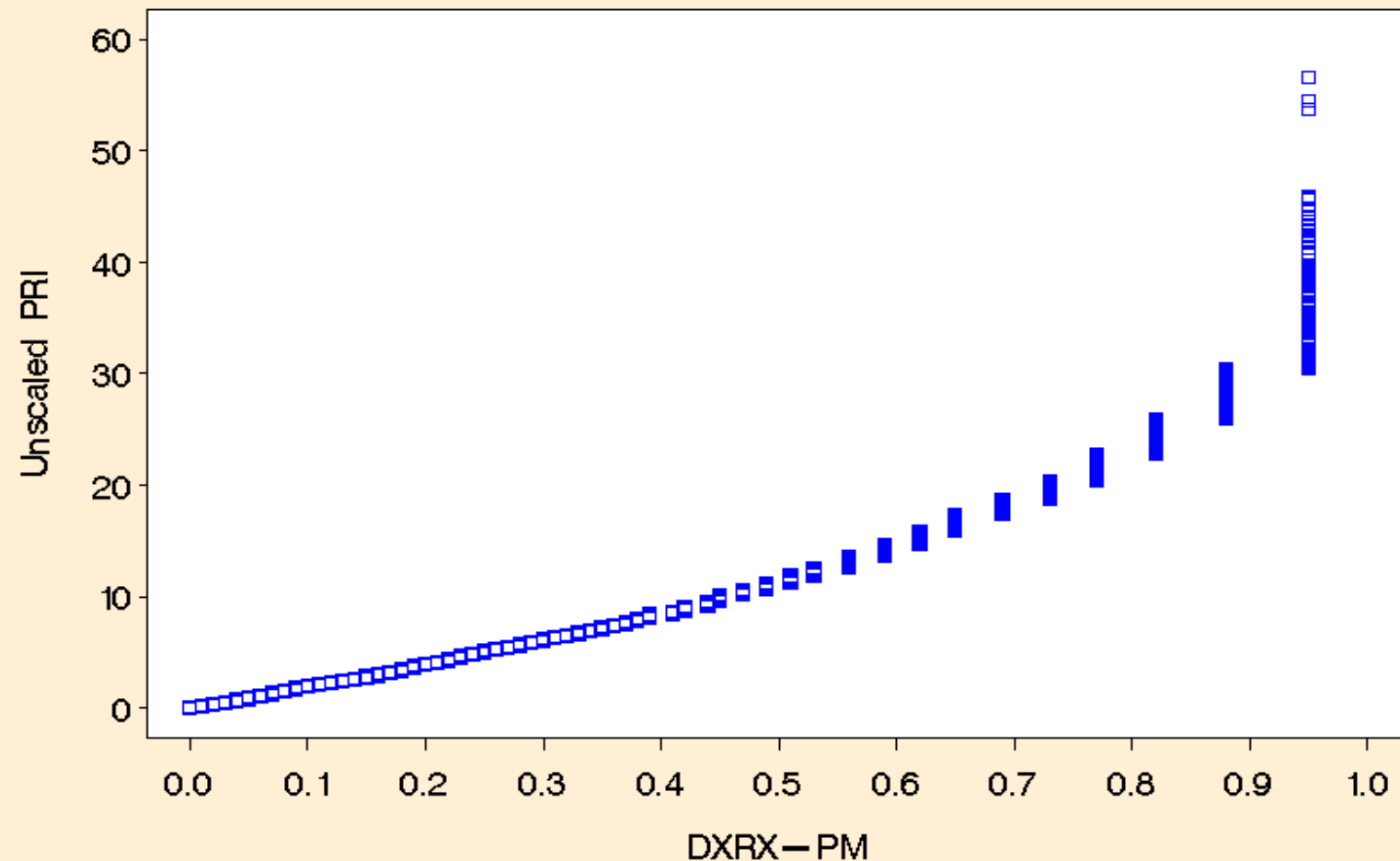
Improving Your Hand in Care Management

May 4-7, 2008 - The Mirage - Las Vegas, Nevada

THE JOHNS HOPKINS UNIVERSITY'S 2008 ACG INTERNATIONAL RISK ADJUSTMENT CONFERENCE

Members DXRX—PM & Unscaled PRI Scores
ACG version 8

**Version
8**



Improving Your Hand in Care Management

May 4-7, 2008 - The Mirage - Las Vegas, Nevada



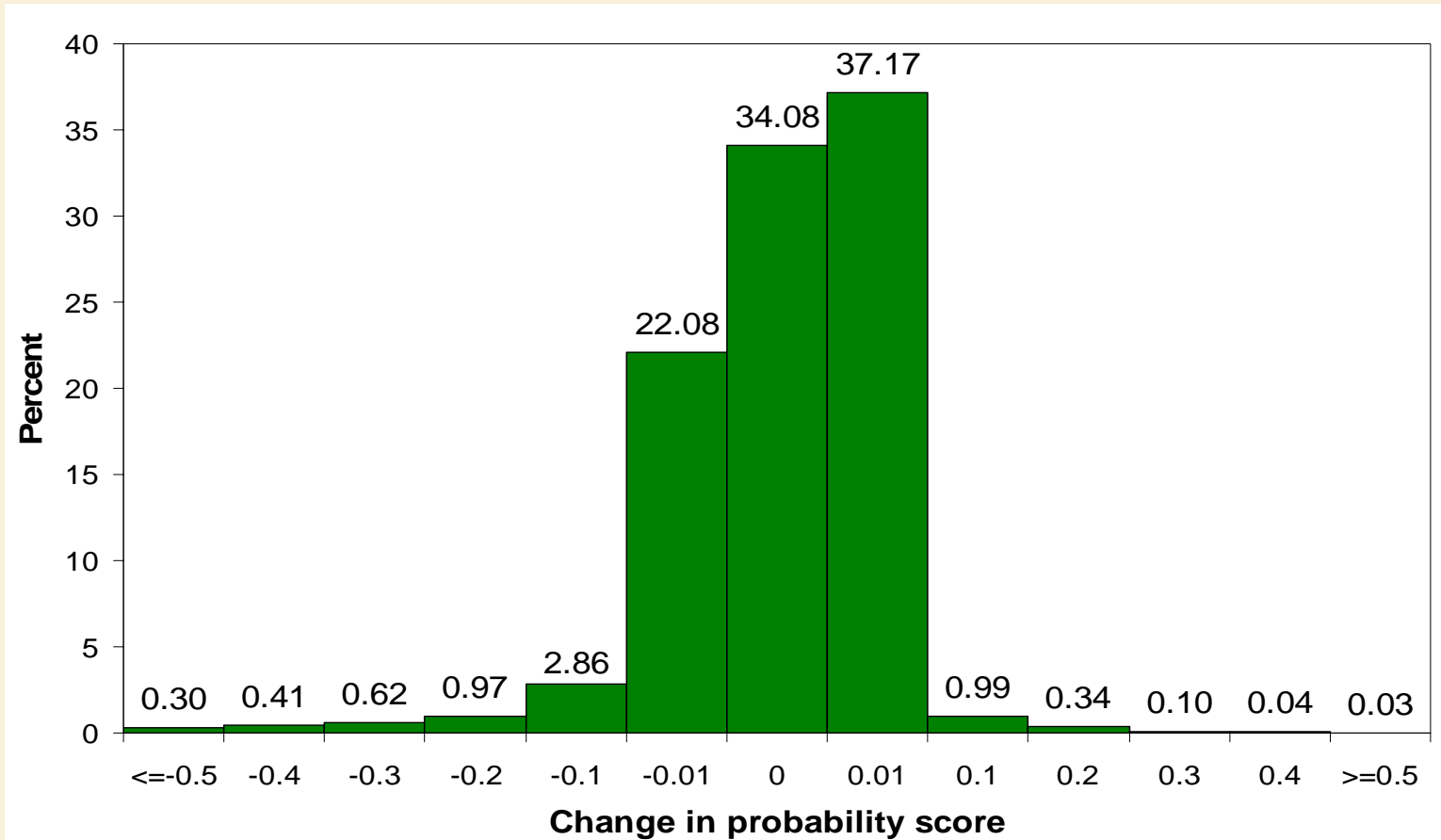
Changes in Individual Scores

- Majority of members experienced very small change in probability score
- 93% of scores changed + or - 0.01
- Greatest negative change = -0.8
- Greatest positive change = 0.76



THE JOHNS HOPKINS UNIVERSITY'S 2008 ACG INTERNATIONAL RISK ADJUSTMENT CONFERENCE

Change in ACG Probability Score - Version 7 to Version 8



Improving Your Hand in Care Management

May 4-7, 2008 - The Mirage - Las Vegas, Nevada

Implications

- Changes to types and quantities of members screened
 - Screening report volume dropped ~ 85%
- Changes to members' individual scores
 - Most changes small, but some dramatic



Summary

- Thoroughly understand how your company uses ACG data
- Complete a preliminary analysis to determine impact on care management activities



Contact Information

Heather K. Castro
Health Data Analyst

Johns Hopkins HealthCare LLC
Care Management Department

hcastro@jhhc.com



Improving Your Hand in Care Management

May 4-7, 2008 - The Mirage - Las Vegas, Nevada